

# *Vintage Elements*

Antique European Flooring and Design Elements



- New Rococo ca. 1880 - 1890 Tirol, Manufacturer "Ernst Teichert", City of Meissen.
- Beige/rosé, richly ornamented.
- Height: 9' 11" / Width: 3' 5" / Depth: 2' 6".
- Price: \$39,000 includes shipment.

# *Vintage Elements*

Antique European Flooring and Design Elements



- ca. 1820 Black Forest, Germany.
- Extensive marbled glazed tile; heated seating area.
- Height: 5' 3" with foundation / Width: 2' 2" / Depth: 2' 4".
- Price: \$24,000 includes shipment.

# *Vintage Elements*

Antique European Flooring and Design Elements



- ca. 1900 Upper Bavaria, Germany.
- Light yellow glazed tile.
- Height: 4' 6" with foundation / Width: 2' / Depth: 4' 5"; optional electric heating element for wood and electric operation.
- Price: \$21,000 includes shipment

# *Vintage Elements*

Antique European Flooring and Design Elements



- Classicism period ca.1790 Salzburg, Austria.
- Unglazed terracotta with impressions of Apollo, Diana and Terpsichore
- Height: 7'5" Diameter: 2'6"; optional electric heating element for wood and electric operation.
- Price: \$66,000 includes shipping

# *Vintage Elements*

Antique European Flooring and Design Elements



- ca.1880 Sweden.
- White with beige-golden décor elements gustavian-style, brass door.
- Height: 9' Width: 3' Depth: 2'.
- Price: \$55,000 includes shipping.



# *Vintage Elements*

Antique European Flooring and Design Elements



- barrel-style, ca.1800 Austria.
- Blue-green, breech-loader oven (is fired from the back).
- Height: 7' 6" including the vase; Diameter 2' 6".
- Price: \$40,000 includes shipping.

# *Vintage Elements*

Antique European Flooring and Design Elements



- Art Deco, Latvia, ca. 1920.
- Freestanding, white tiles.
- Height: 8' Width: 3' Depth: 1/6".
- Price: \$25,000 includes shipping.

# *Vintage Elements*

Antique European Flooring and Design Elements



- Salon-style, Sweden, ca. 1860.
- 4/7<sup>th</sup> oven; eggshell white tile; purple/gray ornamentation; brass door; black.
- Height: 11' can be reduced to 7' 8" Diameter: 2' 6".
- Price: \$45,000 includes shipping.



# *Vintage Elements*

Antique European Flooring and Design Elements



- Salon-style, Sweden, ca. 1890.
- Half cylinder oven with crown; eggshell white tile; brass or nickel door.
- Height: 11' can be reduced to 7' 8" Diameter: 2' 8".
- Price: \$20,000 includes shipping.

# *Vintage Elements*

Antique European Flooring and Design Elements



- Switzerland, ca. 1880.
- Green tile, warming compartment with brass knob.
- Height: 5' Width: 2' 10" Depth: 3'.
- Price: \$21,000 includes shipping.

# *Vintage Elements*

Antique European Flooring and Design Elements



- Germany, City of Zillertal ca. 1830.
- Yellow.
- Height: 4' 11" including seat height of 1'6" Width: 2' 7" Depth: 3' 3".
- Price: \$25,000 includes shipping.

# *Vintage Elements*

Antique European Flooring and Design Elements



- ca. 1720.
- Rear fired, blue-white.
- Height: 7' 2" Width: 2' 7" Depth: 2' 11".
- Price: \$105,000 includes shipping.

# *Vintage Elements*

Antique European Flooring and Design Elements



- Salon-style, City of Velten/Berlin, Germany, ca. 1890.
- White, freestanding, unglazed ornamental trim.
- Height: 7' 1" Width: 1' 10" Depth: 1' 9".
- Price: \$21,000 includes shipping.



# *Vintage Elements*

Antique European Flooring and Design Elements



- Sweden, ca. 1890.
- White, crown, nickel door, brass optional.
- Height: 6' 8" Width: 3' 1" Depth: 1' 6".
- Price: \$24,000 includes shipping.

# *Vintage Elements*

Antique European Flooring and Design Elements



- Sweden, ca. 1890.
- White, crown, brass door.
- Height: 6' 8" Width: 3' 0" Depth: 1' 4".
- Price: \$21,000 includes shipping.

# *Vintage Elements*

Antique European Flooring and Design Elements



- Sweden, ca. 1890.
- White, crown, brass door.
- Height: 9' 5" Width: 3' 1" Depth: 1' 6".
- Price: \$27,000 includes shipping.

# *Vintage Elements*

Antique European Flooring and Design Elements



- Antique “Kaminofen” (Fireplace oven), City of Velten/Berlin, Germany, ca. 1890.
- Light-grey, gold ornaments, corner installation.
- Height: 10' 9” Width: 4' Depth: 1' 11”.
- Price: \$52,000 includes shipping.

# *Vintage Elements*

Antique European Flooring and Design Elements



- Antique “Sesselherd” (tiled stove with cooking area), Upper Bavaria, Germany, ca. 1860.
- Height: 4' 9” Width: 2' 8” Depth: 2' 1”.
- Price: \$20,000 includes shipping.



# *Vintage Elements*

Antique European Flooring and Design Elements



- Empire-style, State of Baden, Germany.
- Blue-grey, glazed, masonry base.
- Height: 8' 4" Width: 2' 11" Depth: 3' 7".
- Price: \$20,000 includes shipping.

# *Vintage Elements*

Antique European Flooring and Design Elements



- Bavaria, Germany, ca 1880.
- variegated white tiles, cast-iron heating compartment and door with ornaments.
- Height: 5' 10" Width: 2' 1" Depth: 1' 9".
- Price: \$21,000 includes shipping.

# *Vintage Elements*

Antique European Flooring and Design Elements



- Art-deco, Riga, Latvia, ca 1920.
- White, cast-iron door.
- Height: 6' 8" Width: 2' 8" Depth: 1' 6".
- Price: \$19,000 includes shipping.

# *Vintage Elements*

Antique European Flooring and Design Elements



- Upper Bavaria, Germany, ca 1890.
- Light-grey, cast-iron heating compartment and door with ornaments.
- Height: 5' 10" Width: 2' 3" Depth: 1' 5".
- Price: \$16,000 includes shipping.

# *Vintage Elements*

Antique European Flooring and Design Elements



- Antique “Zirkulierofen” (circulating oven), Biedermeier-style, Upper Palatinate, Germany, ca 1820.
- Dark green, biblical ornaments.
- Height: 8' 1” Width: 2' 5” Depth: 1' 5”.
- Price: \$38,000 includes shipping.



# *Vintage Elements*

Antique European Flooring and Design Elements



- South Tyrol, Italy, ca 1820.
- Green, rear-fired.
- Height: 6' 6" without masonry base Width: 2' 11" Depth: 4' 1".
- Price: \$39,000 includes shipping.

# *Vintage Elements*

Antique European Flooring and Design Elements



- Antique “Zirkulierofen” (circulating oven), Biedermeier-style, Saxonia, Germany, ca 1860.
- Unglazed clay tiles, cast iron cooking compartment.
- Height: 8' 8” can be reduced Width: 2' 1” Depth: 1' 5”.
- Price: \$30,000 includes shipping.

# *Vintage Elements*

Antique European Flooring and Design Elements



- Salon-style, Coelln-Meissen, Germany, ca 1880.
- White, corner installation.
- Height: 6' 7" Width: 2' 10" Depth: 2' 5".
- Price: \$20,000 includes shipping.

# *Vintage Elements*

Antique European Flooring and Design Elements



- South Tyrol, Italy, ca 1820.
- Several shades of brown, wooden base.
- Height: 9' 2" Diameter: 2' 10".
- Price: \$44,000 includes shipping.

# *Vintage Elements*

Antique European Flooring and Design Elements



- Salon-style, Austria, ca. 1890.
- Beige, blue ornaments, cast iron fire door, nickel finish.
- Height: 7' 2" Width: 1' 11" Depth: 1' 7".
- Price: \$21,000 includes shipping.

# *Vintage Elements*

Antique European Flooring and Design Elements



- Bavaria, Germany, ca. 1910.
- Freestanding, blue.
- Height: 5' 3" Width: 1' 11" Depth: 1' 4".
- Price: \$13,000 includes shipping.



# *Vintage Elements*

Antique European Flooring and Design Elements



- Estonia, ca. 1880.
- Unglazed clay tiles, cast iron door with ornaments.
- Height: 5' 10" Width: 1' 6" Depth: 3'.
- Price: \$25,000 includes shipping.

# *Vintage Elements*

Antique European Flooring and Design Elements



- Vierlaender/Hamburg, Germany ca. 1860.
- Height: 6' 1" Width: 2' 7" Depth: 1' 5".
- Price: \$30,00 includes shipping.

# *Vintage Elements*

Antique European Flooring and Design Elements



- East Switzerland, ca. 1850.
- White, green patterns, brass warming compartment.
- Height: 5' 2" Width: 4' 9" Depth: 4' 11".
- Price: \$27,000 includes shipping.

# *Vintage Elements*

Antique European Flooring and Design Elements



- Biedermeier, Austria, ca 1820.
- White, brass base and fire doors.
- Height: 8' 3" Diameter: 2' 9".
- Price: \$55,000 includes shipping.

# *Vintage Elements*

Antique European Flooring and Design Elements



- South Germany, ca. 1800.
- Brown glazed, brass warming compartment.
- Height: 4' 8" Width: 1' 9" Depth: 1' 4".
- Price: \$15,000 includes shipping.

# *Vintage Elements*

Antique European Flooring and Design Elements



- Black Forest, Germany, ca. 1850.
- White, green speckled tiles.
- Height: 4' 1" Width: 2' 7" Depth: 1' 9".
- Price: \$20,000 includes shipping.



# *Vintage Elements*

Antique European Flooring and Design Elements



- Small Antique “Kachelofen” (tiled stove), Alsace, France, ca. 1890.
- White.
- Height: 3' 8” Width: 1' 7” Depth: 2' 3”.
- Price: \$10,600 includes shipping.

# *Vintage Elements*

Antique European Flooring and Design Elements



- South Tyrol, Italy, ca. 1820.
- Green.
- Height: 6' 1" Width: 2' 7" Depth: 2' 4".
- Price: \$39,000 includes shipping.

# *Vintage Elements*

Antique European Flooring and Design Elements



- Upper Palatinate, Germany, ca. 1790.
- Yellow, Classicism, Wooden legs.
- Height: 7' 7" Diameter: 2' 10".
- Price: \$49,000 includes shipping.

# *Vintage Elements*

Antique European Flooring and Design Elements



- Rococo, Liechtenstein.
- White, Golden ornaments, from the Palace of Liechtenstein
- Height: 8' 8" Width: 4' .
- Price: \$61,500 includes shipping.



# *Vintage Elements*

Antique European Flooring and Design Elements



- Rococo, Liechtenstein.
- White, from the Palace of Liechtenstein
- Height: 10' 10" Diameter: 3' 8".
- Price: \$81,500 includes shipping.

# *Vintage Elements*

Antique European Flooring and Design Elements



- Small Antique “Kachelofen” (tiled stove), Alsace, France, ca. 1890.
- White.
- Height: 3' 1” Width: 1' 4” Depth: 1' 7”.
- Price: \$9,600 includes shipping.



# *Vintage Elements*

Antique European Flooring and Design Elements



- Salon-style, Rhineland, Germany, ca. 1880.
- White.
- Height: 7' 2" Width: 3' 2" Depth: 1' 11".
- Price: \$23,500 includes shipping.

# *Vintage Elements*

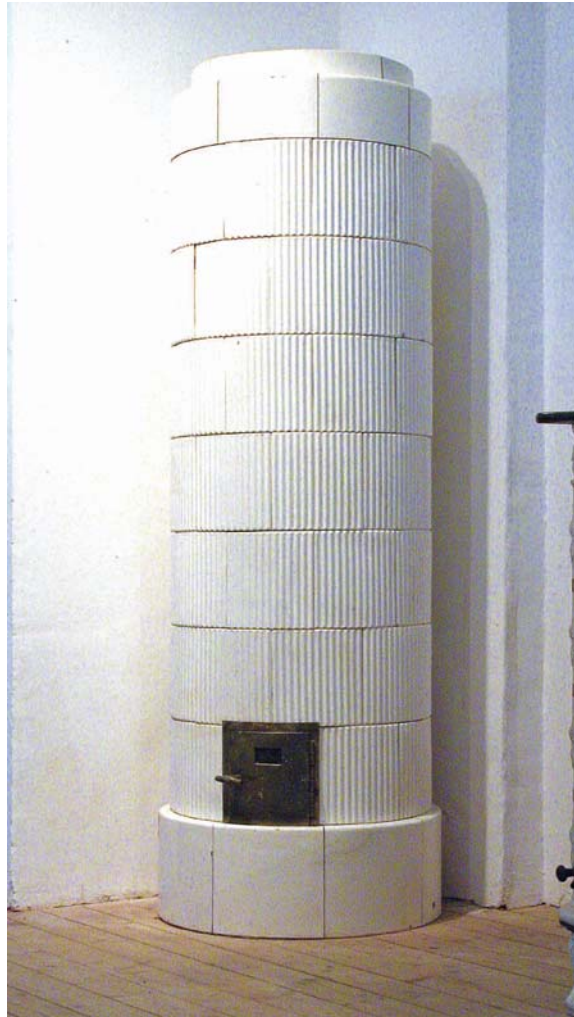
Antique European Flooring and Design Elements



- Antique “Zirkulierofen” (circulating oven), Bohemia, Czech Republic, ca 1850.
- White.
- Height: 7' 5” Width: 2' 7” Depth: 1' 5”.
- Price: \$25,000 includes shipping.

# *Vintage Elements*

Antique European Flooring and Design Elements



- Austria, ca. 1910.
- White.
- Height: 6' 3" Diameter: 2' 6".
- Price: \$28,500 includes shipping.

# *Vintage Elements*

Antique European Flooring and Design Elements



- Salon-style, Austria, ca. 1880.
- White.
- Height: 8' 8" Width: 2' 4" Depth: 1' 8".
- Price: \$41,500 includes shipping

# *Vintage Elements*

Antique European Flooring and Design Elements



- Switzerland, ca. 1850.
- White.
- Height: 8' Diameter: 3' 5".
- Price: \$29,500 includes shipping.



# *Vintage Elements*

Antique European Flooring and Design Elements



- Bavaria, Germany, ca. 1860.
- White, two warming surfaces with brass surround.
- Height: 5' 8" Width: 2' 2" Depth: 1' 6".
- Price: \$17,500 includes shipping



# *Vintage Elements*

Antique European Flooring and Design Elements



- Salon-style, Vienna, Austria, ca. 1910.
- White.
- Height: 6' 6" Diameter: 2' 4".
- Price: \$24,600 includes shipping.

# *Vintage Elements*

Antique European Flooring and Design Elements



- Jugendstil – Art Nouveau, South Tyrol, Italy, ca. 1910.
- Blue-green.
- Height: 8' 2" Width: 2' 2" Depth: 1' 10".
- Price: \$16,500 includes shipping

# *Vintage Elements*

Antique European Flooring and Design Elements



- Sweden, ca. 1900.
- White, Half cylinder oven, nickel door.
- Height: 7' 7" Diameter: 2' 5".
- Price: \$17,500 includes shipping.

# *Vintage Elements*

Antique European Flooring and Design Elements



- Sweden, ca. 1890.
- White, Half cylinder oven, brass door.
- Height: 8' 3" Diameter: 2' 6".
- Price: \$18,500 includes shipping.

# *Vintage Elements*

Antique European Flooring and Design Elements



- Sweden, ca. 1900.
- White, Half cylinder oven, nickel door, brass optional.
- Height: 8' 8" Diameter: 2' 6".
- Price: \$17,500 includes shipping.

# *Vintage Elements*

Antique European Flooring and Design Elements



- Sweden, ca. 1800.
- White with green diagonal crossing lines, Half cylinder oven, iron door.
- Height: 7' 2" Diameter: 2' 6".
- Price: \$24,500 includes shipping.



# *Vintage Elements*

Antique European Flooring and Design Elements



- Sweden, ca. 1890.
- White, Half cylinder oven with crown, brass door.
- Height: 8' Diameter: 2' 6".
- Price: \$24,500 includes shipping.

# *Vintage Elements*

Antique European Flooring and Design Elements



- Sweden, ca. 1910.
- White, Half cylinder oven, nickel door.
- Height: 9' 3" Diameter: 2' 8".
- Price: \$18,000 includes shipping.

# *Vintage Elements*

Antique European Flooring and Design Elements



- Sweden, ca. 1900.
- White, Half cylinder oven with crown, brass door nickel optional.
- Height: 7' 10" Diameter: 2' 8".
- Price: \$19,600 includes shipping.

# *Vintage Elements*

Antique European Flooring and Design Elements



- Sweden, ca. 1890.
- White, Half cylinder oven with crown, brass door.
- Height: 7' 2" Diameter: 2' 7".
- Price: \$17,800 includes shipping.

# *Vintage Elements*

Antique European Flooring and Design Elements



- Sweden, ca. 1900.
- White, Half cylinder oven with all nickel hardware.
- Height: 9' 1" Diameter: 2' 8".
- Price: \$19,600 includes shipping.

# *Vintage Elements*

Antique European Flooring and Design Elements



- Saxony, Germany, ca. 1890.
- White, Manufacture “Ernst Teichert”, City of Meissen.
- Height: 7' 1” Width: 2' 3” Depth: 1' 10”.
- Price: \$22,500 includes shipping.



# *Vintage Elements*

Antique European Flooring and Design Elements



- Sweden, ca. 1900.
- White, all Nickel hardware.
- Height: 7' 6" Width: 3' 1" Depth: 1' 10".
- Price: \$21,500 includes shipping.

# *Vintage Elements*

Antique European Flooring and Design Elements



- Sweden, ca. 1900.
- White, all Nickel hardware.
- Height: 8' 5" Width: 3' 1" Depth: 1' 10".
- Price: \$24,600 includes shipping.

# *Vintage Elements*

Antique European Flooring and Design Elements



- Sweden, ca. 1900.
- White, all Nickel hardware.
- Height: 8' Width: 3' 6" Depth: 1' 7".
- Price: \$22,500 includes shipping.

# *Vintage Elements*

Antique European Flooring and Design Elements



- Sweden, ca. 1900.
- White, all Nickel hardware.
- Height: 7' 7" Width: 2' 11" Depth: 1' 8".
- Price: \$21,000 includes shipping.

# *Vintage Elements*

Antique European Flooring and Design Elements



- Sweden, ca. 1890.
- White, Nickel door (Brass optional).
- Height: 7' 7" Width: 3' 8" Depth: 1' 8".
- Price: \$19,600 includes shipping.

# *Vintage Elements*

Antique European Flooring and Design Elements



- Antique "Sesselherd" (tiled stove with cooking area), Upper Bavaria, Germany, ca. 1870.
- White, Warming Drawer with Brass surround
- Height: 4' 4" Width: 3' 8" Depth: 2' .
- Price: \$17,800 includes shipping.



# *Vintage Elements*

Antique European Flooring and Design Elements



- Antique “Sesselherd” (tiled stove with cooking area), Els Valley, Germany, ca. 1820.
- Black.
- Height: 4' 11” Width: 3' 8” Depth: 2' 1”.
- Price: \$19,200 includes shipping.

# *Vintage Elements*

Antique European Flooring and Design Elements



- Salon-style, South Tyrol, Italy, ca. 1905.
- White, Art Nouveau Warming Drawer.
- Height: 7' 5" Width: 2' 5" Depth: 1' 11".
- Price: \$28,600 includes shipping.

# *Vintage Elements*

Antique European Flooring and Design Elements



- Barrel-style, "Salzkammergut", Austria, ca. 1830.
- Light Blue, Biedermeier.
- Height: 8' Diameter: 2' 10".
- Price: \$35,500 includes shipping.

# *Vintage Elements*

Antique European Flooring and Design Elements



- Saxony, Germany, ca. 1910.
- Blue - Green.
- Height: 5' 4" Width: 2' 1" Depth: 1' 5".
- Price: \$11,500 includes shipping.

# *Vintage Elements*

Antique European Flooring and Design Elements



- Riga, Latvia, ca. 1920.
- White, Art Deco.
- Height: 6' 10" Width: 2' 8" Depth: 1' 7".
- Price: \$16,500 includes shipping.



# *Vintage Elements*

Antique European Flooring and Design Elements



- Cast Iron oven, Westfalia, Germany, ca. 1743.
- Height: 7' 3" Width: 3' 1" Depth: 2' 2".
- Price: \$81,200 includes shipping.



# *Vintage Elements*

Antique European Flooring and Design Elements



- Chamber Oven, Canton of Zurich, Switzerland, ca. 1860.
- White, Unglazed Ornaments.
- Height: 5' 1" Width: 2' 11" Depth: 2' 2".
- Price: \$26,200 includes shipping.

# *Vintage Elements*

Antique European Flooring and Design Elements



- Chamber Oven, Canton of Zurich, Switzerland, ca. 1870.
- Green.
- Height: 5' 8" Width: 4' Depth: 4'.
- Price: \$23,200 includes shipping.

# *Vintage Elements*

Antique European Flooring and Design Elements



- Switzerland, ca. 1840.
- Green, Pattern-glazed Tiles.
- Height: 5' 1" Width: 2' 11" Depth: 2' 8".
- Price: \$28,600 includes shipping.

# *Vintage Elements*

Antique European Flooring and Design Elements



- Farmer Chamber Oven, City of Voralberg, Germany, ca. 1900.
- Beige with Rust Colored speckles.
- Height: 5' 4" Width: 3' 2" Depth: 3' 8".
- Price: \$23,500 includes shipping.